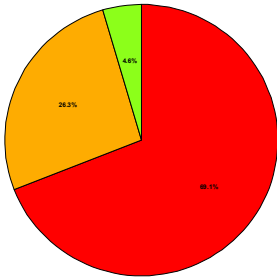


Warley Woods User Survey 2011

Thanks to everyone who completed the user survey . 260 people.
Here's a summary of what you told us

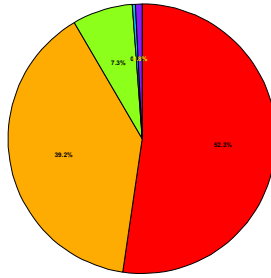
The appearance of the park?

How would you rate the appearance of the park?



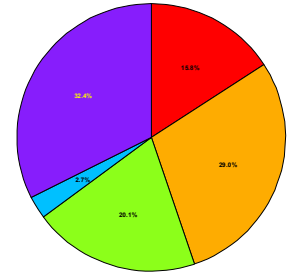
Trees shrubs and grass areas

How would you rate the standard of maintenance of the tre...



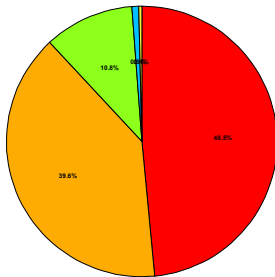
How do you rate the café?

How would you rate the Café at the Pavilion?



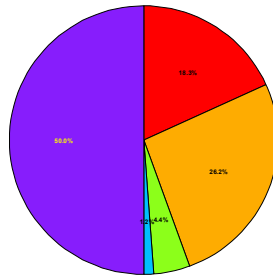
The standard of cleanliness of the park

How would you rate the standard of cleanliness in the park?



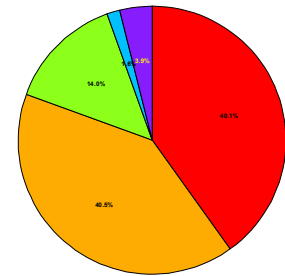
Maintenance of the golf course?

How would you rate the facilities and standard of mainten...



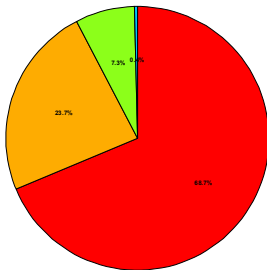
Communication from the Trust?

The Trust uses a range of information available to park u...



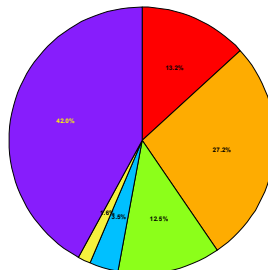
Ease of access around the park?

How easy is it for you to get around the park?



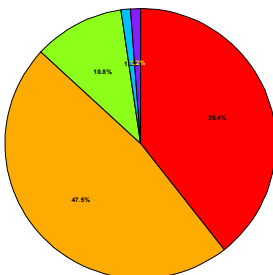
Maintenance of the children's play area?

How would you rate the standard of maintenance of the chi...



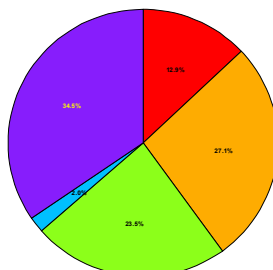
Range of visitor facilities?

What do you think of the range of visitor facilities? We ...



The facilities at the Pavilion

How would you rate the facilities at the Pavilion? (some ...



This is just a summary of the main responses. You can see the full detail including comments at www.warleywoods.org.uk on the downloads page.

■ Very good
 ■ Good
 ■ Fair
 ■ Poor
 ■ Very Poor
 ■ Don't Know